



# Single sided wall confinement of microemulsions with and without additive

15. Apr 2015

Henrich Frielinghaus,  
M. Kerscher, F. Lipfert,  
O. Holderer, P. Busch, S. Mattauch, D. Richter,  
M. Belushkin, G. Gompper

Hair care



Personal care



Cosmetics



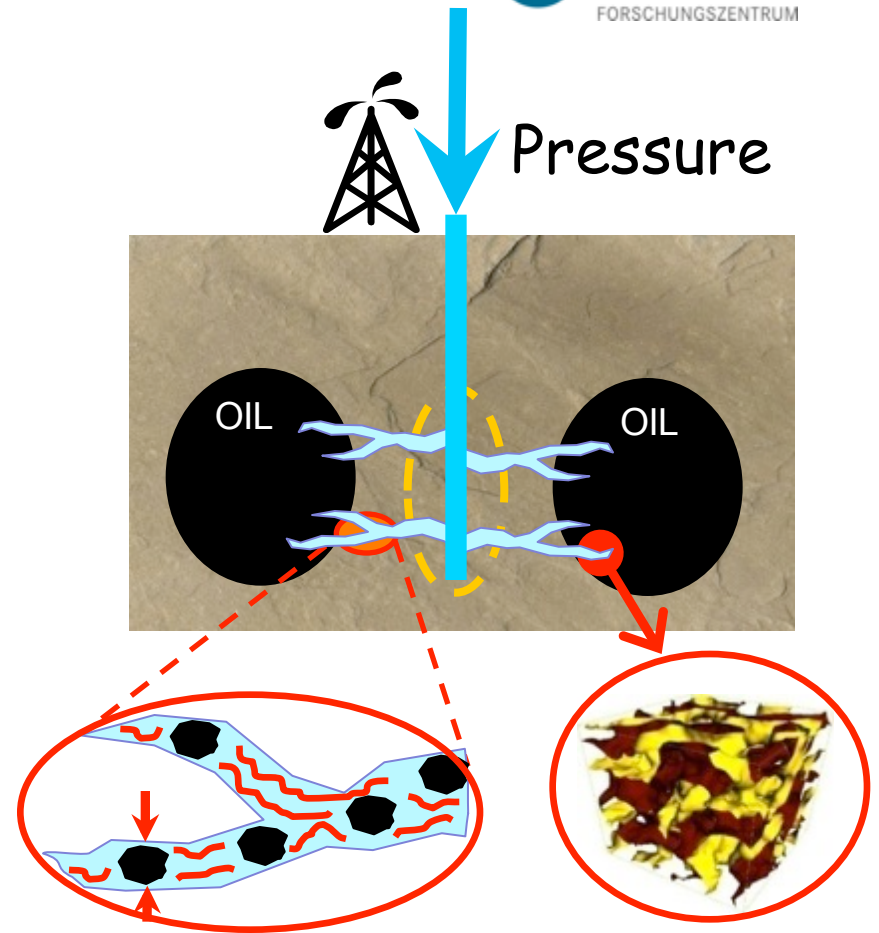
Detergents



Enhanced oil recovery



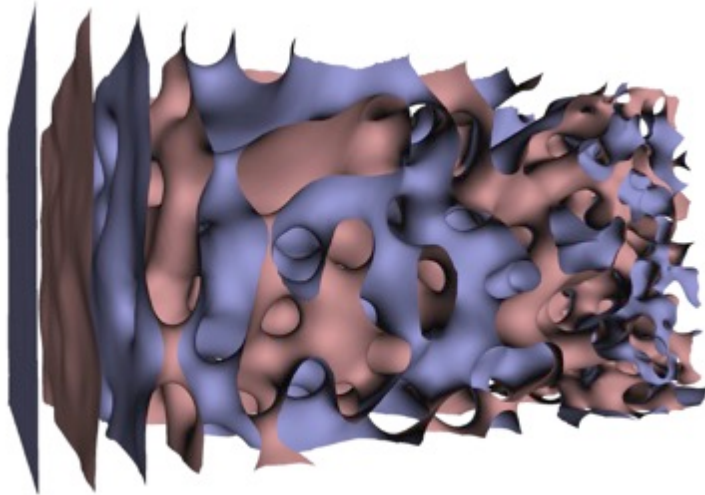
## Oil Production



Aqueous Surfactant Systems are used for:

- Drilling Fluid
- Secondary/Tertiary Oil Production
- **Fracturing Fluid**

## Simulations (M. Belushkin)

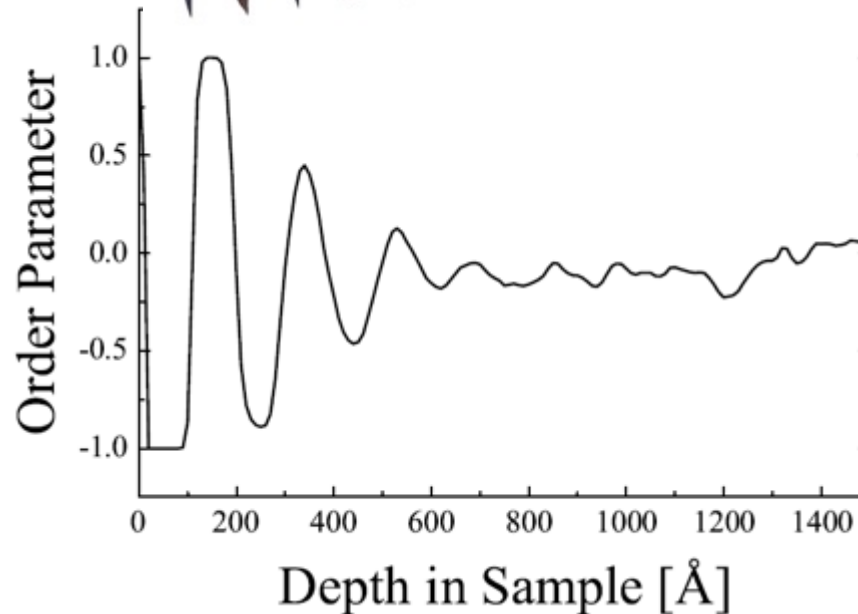


Single order parameter:

+1: Oil

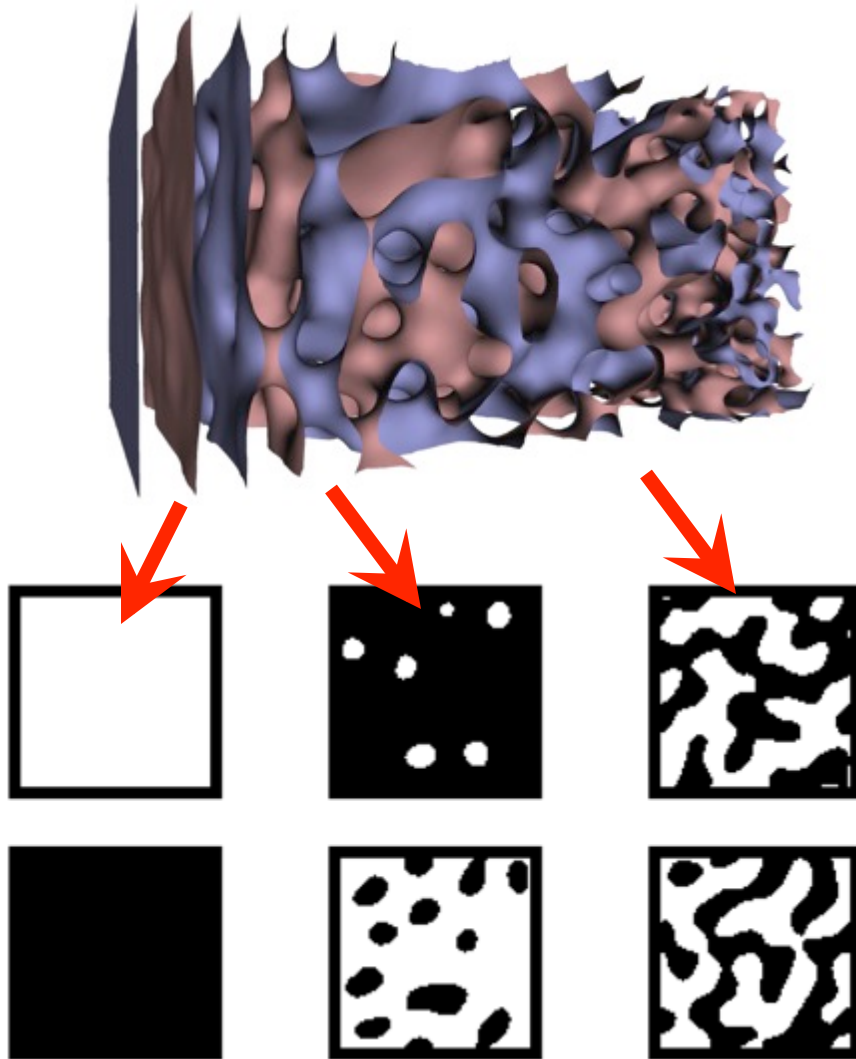
-1: Water

0: Surfactant



**Lamellar order decays !!!**

# Simulations (M. Belushkin)



Single order parameter:

+1: Oil

-1: Water

0: Surfactant

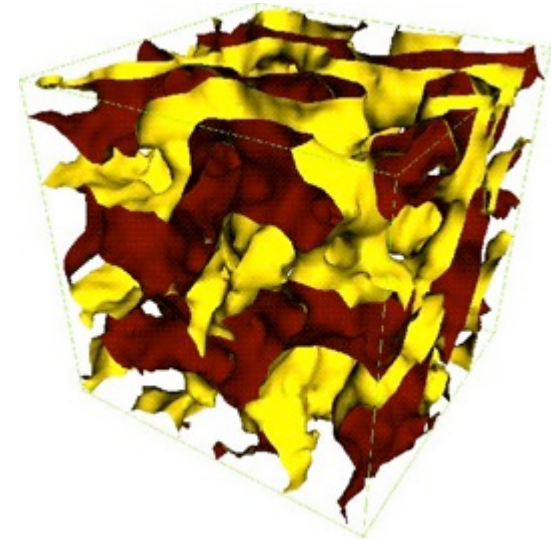
**3 structures !!!**

**How to access  
experimentally ???**

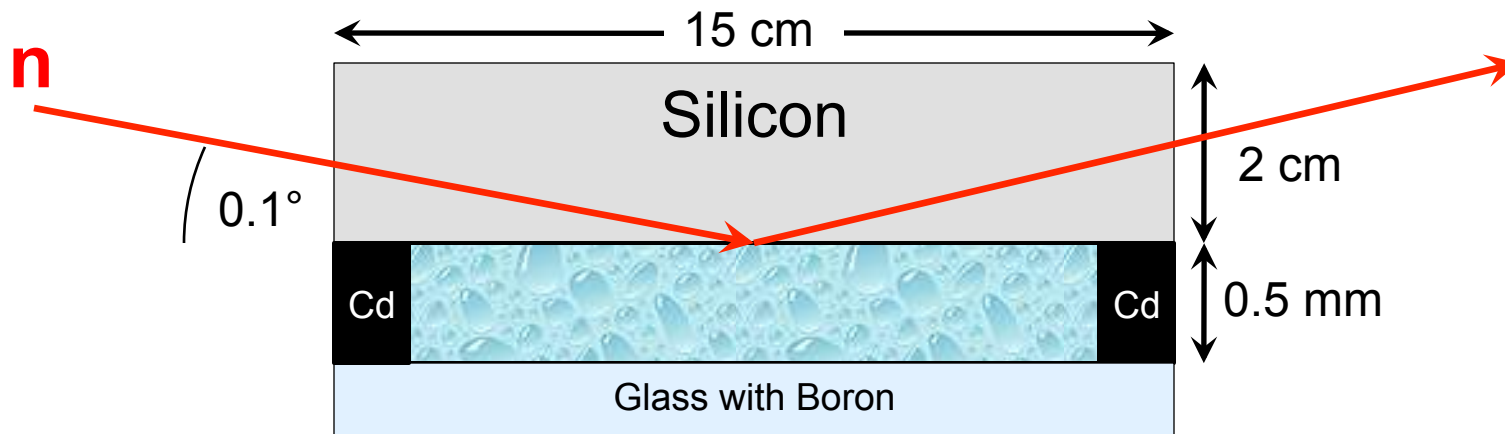
## The System

Water:	D <sub>2</sub> O, H <sub>2</sub> O	(41.5%vol)
Oil:	Decane	(41.5%vol)
Surfactant:	C <sub>10</sub> E <sub>4</sub>	(17.0%vol)

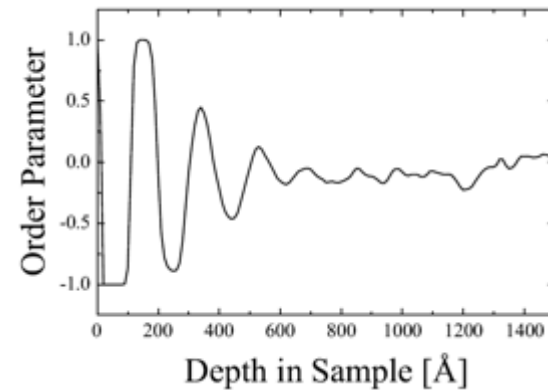
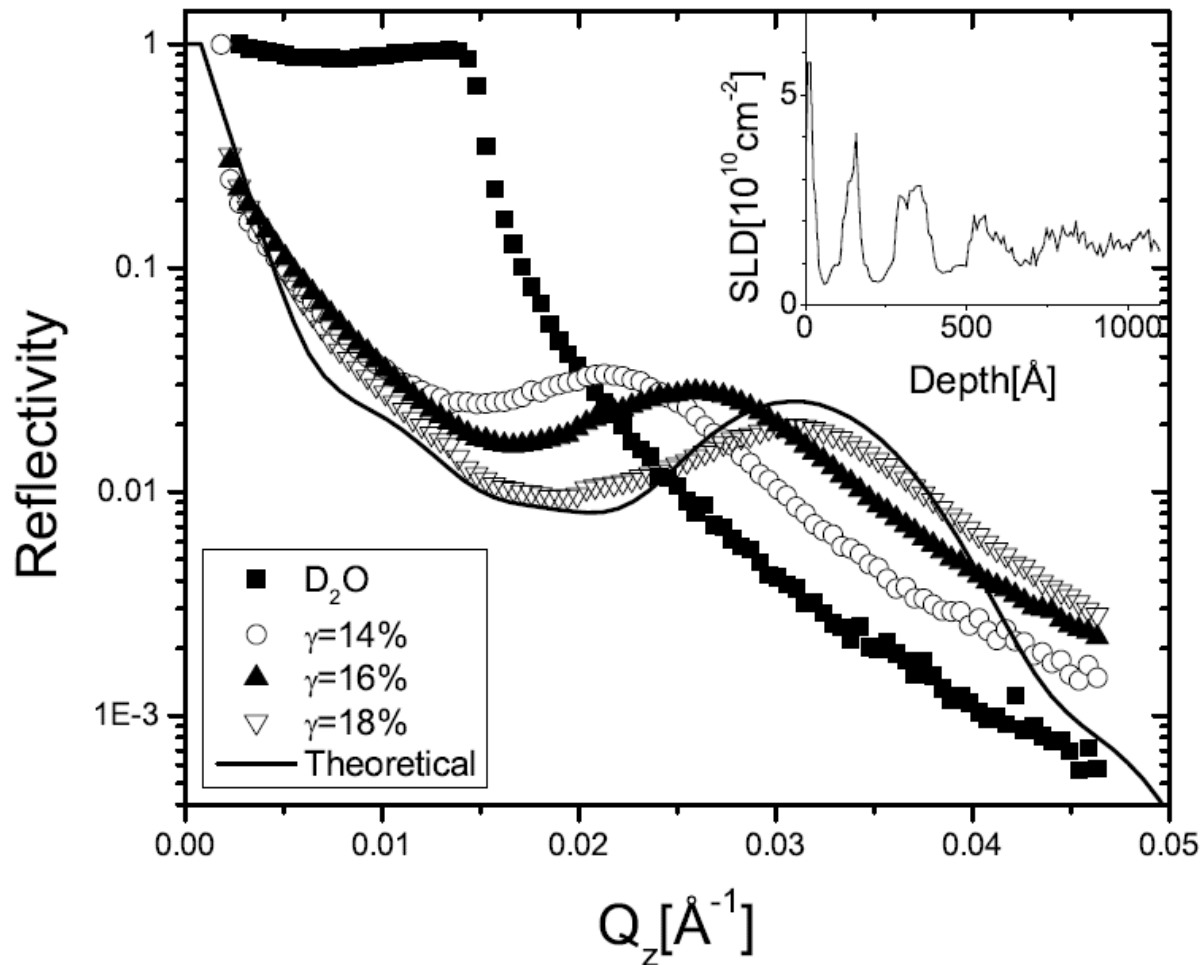
Temperature ca. 25°C



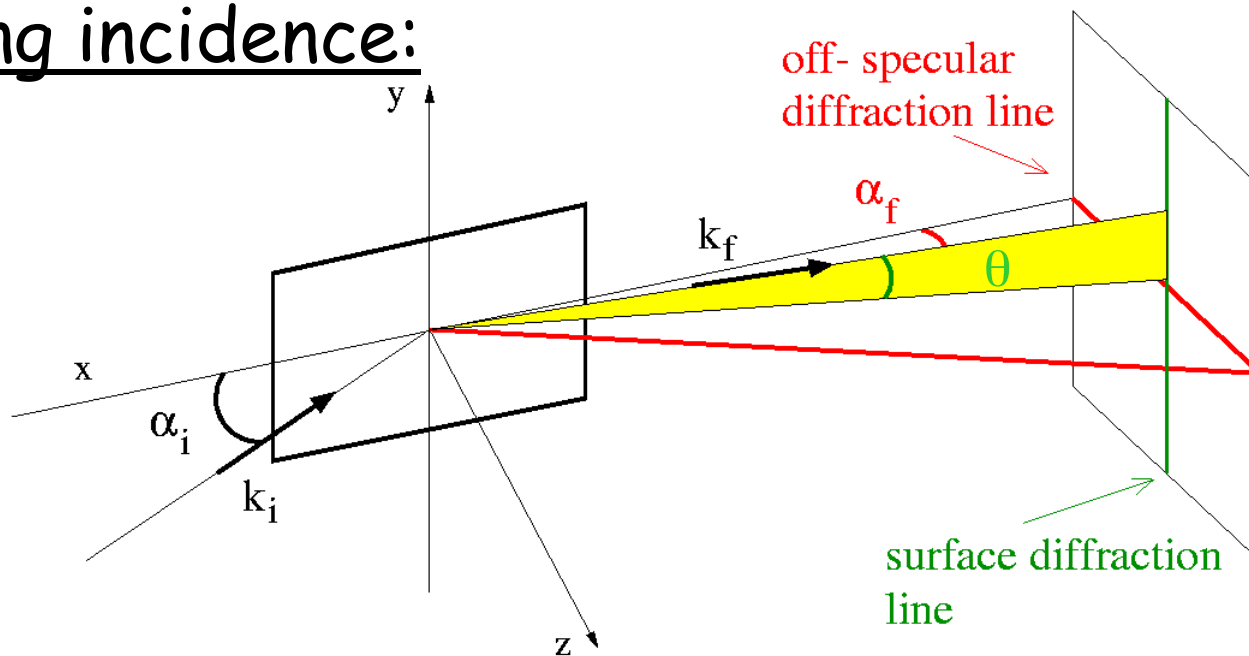
## The Cell



# Reflectometry



# Grazing incidence:

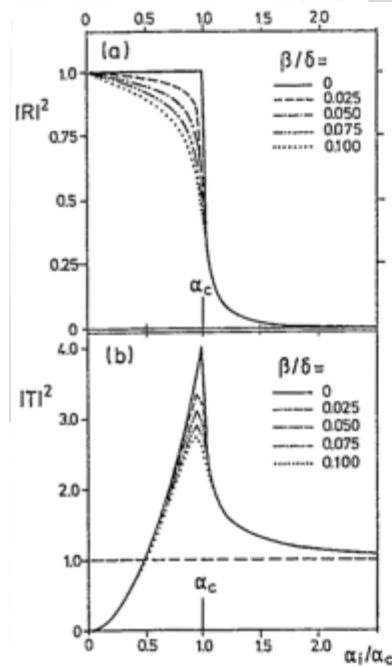
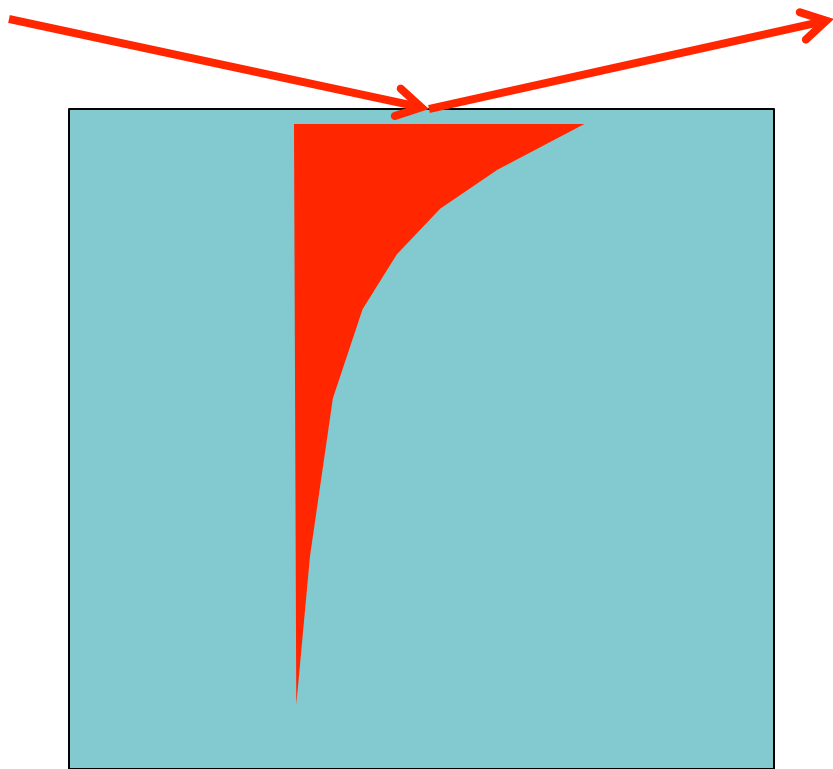


$$\begin{pmatrix} q_x \\ q_y \\ q_z \end{pmatrix} = \frac{2\pi}{\lambda} \cdot \begin{pmatrix} \frac{1}{2} (\alpha_i^2 - \alpha_f^2) - \frac{1}{2} \theta_y^2 \\ \theta_y \\ \alpha_i + \alpha_f \end{pmatrix}$$

→ Reflect.:  $1 \mu\text{m} < \zeta_{//} < 20 \mu\text{m}$   
→ GISANS:  $2 \text{nm} < \zeta_{//} < 600 \text{nm}$   
(large  $\theta_y$ ,  $\alpha$  critical angle)  
 $\alpha$  might be large...



# Evanescent Wave: the depth information



◀ Fig. 2.2. (a) X-ray reflectivity  $|R_i|^2$  and (b) transmissivity  $|T_i|^2$  versus  $\alpha_i$  for various  $\beta/\delta$

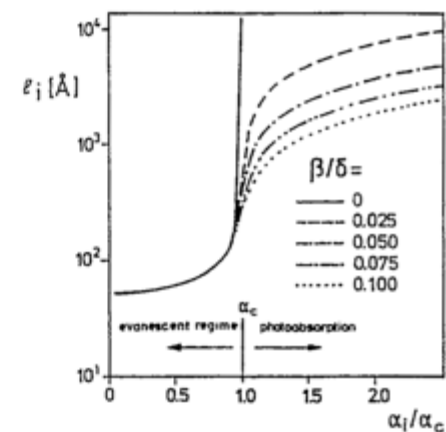
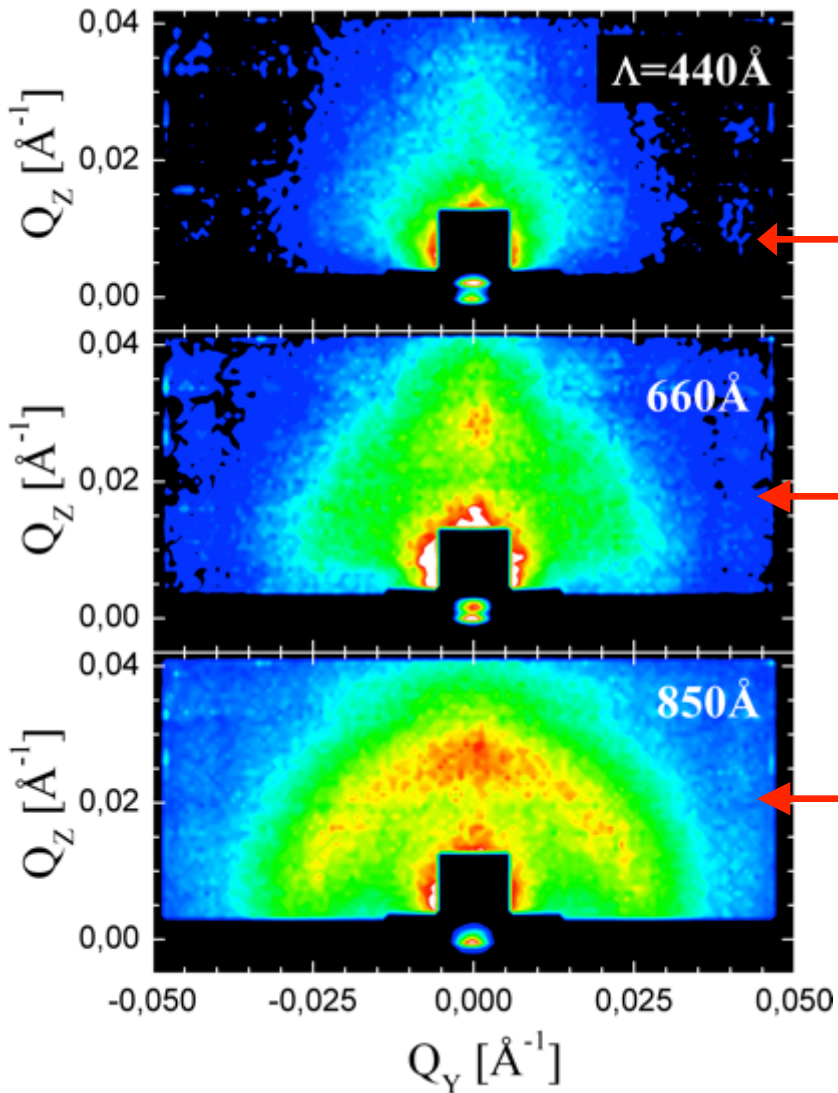
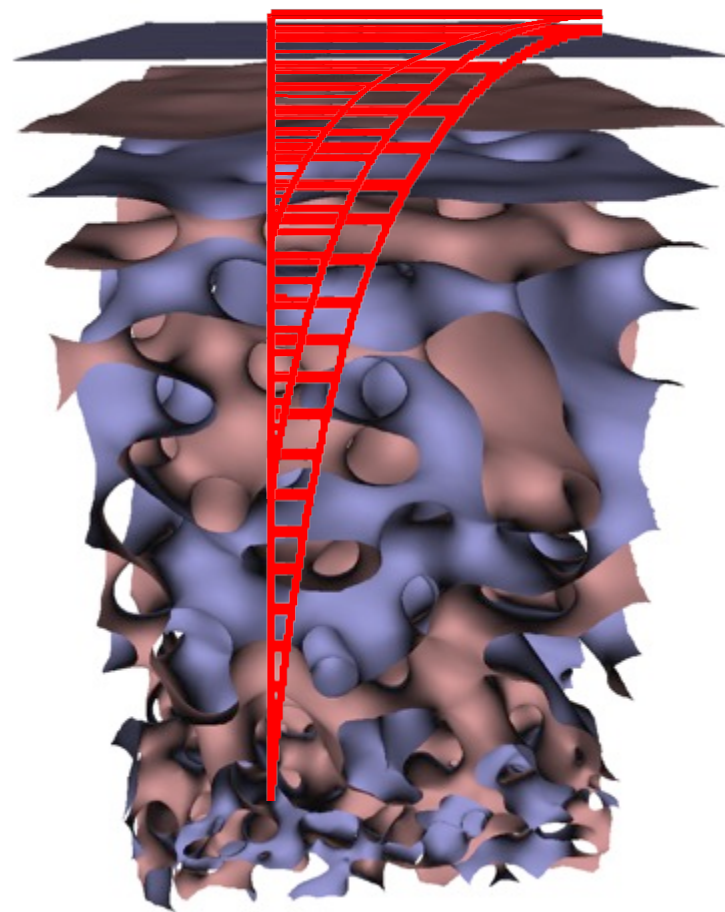


Fig. 2.3. Penetration depth  $l_i$  of evanescent x-rays versus  $\alpha_i/\alpha_c$  for various  $\beta/\delta$

$$L_{i,0} \propto \Delta\rho^{-1/2}$$

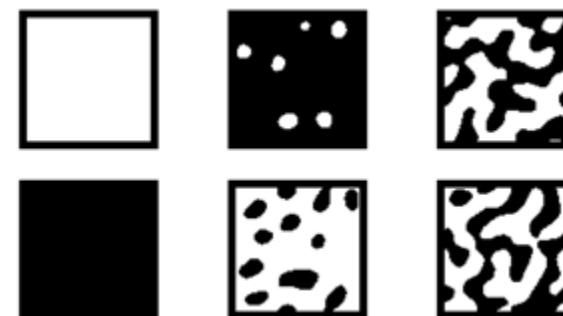
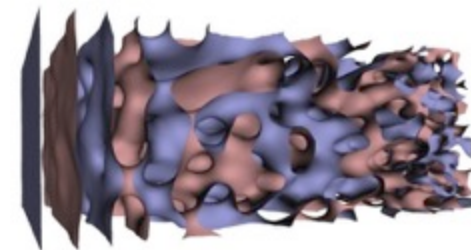
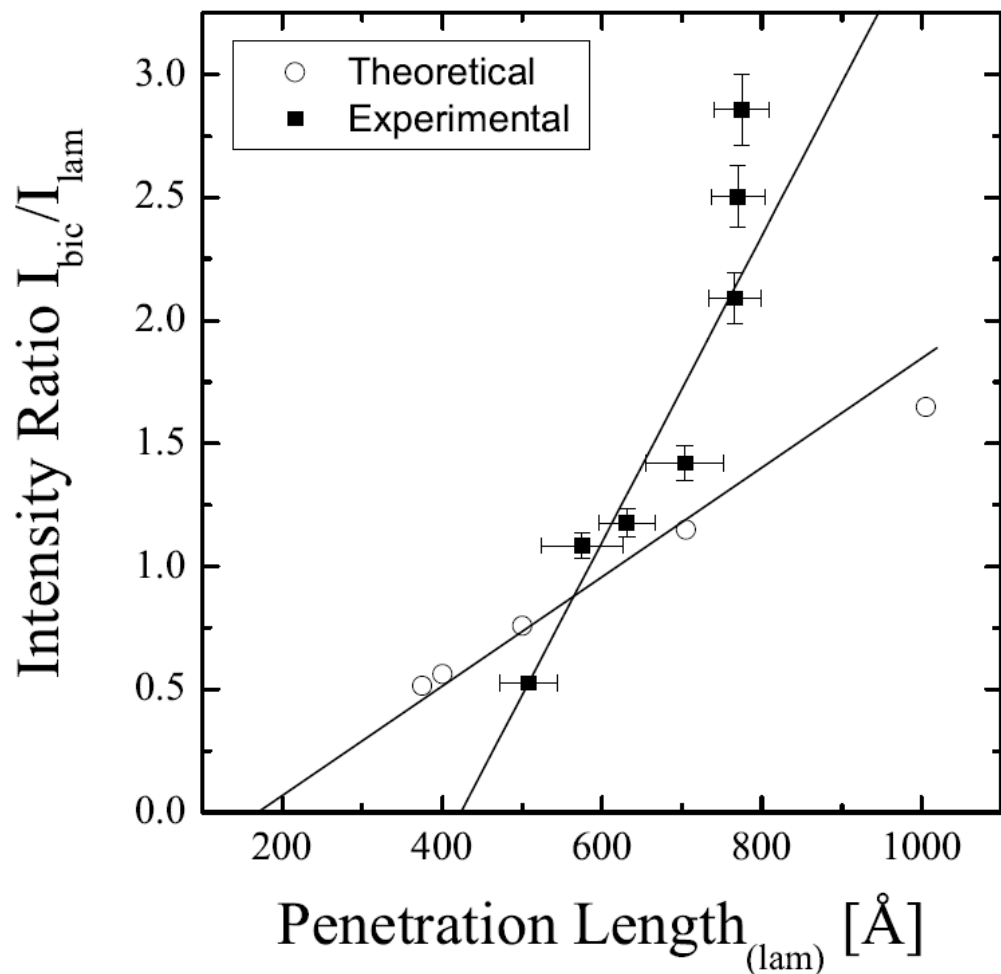


Structure from Computer Simulations:



M. Belushkin

# Results from GISANS

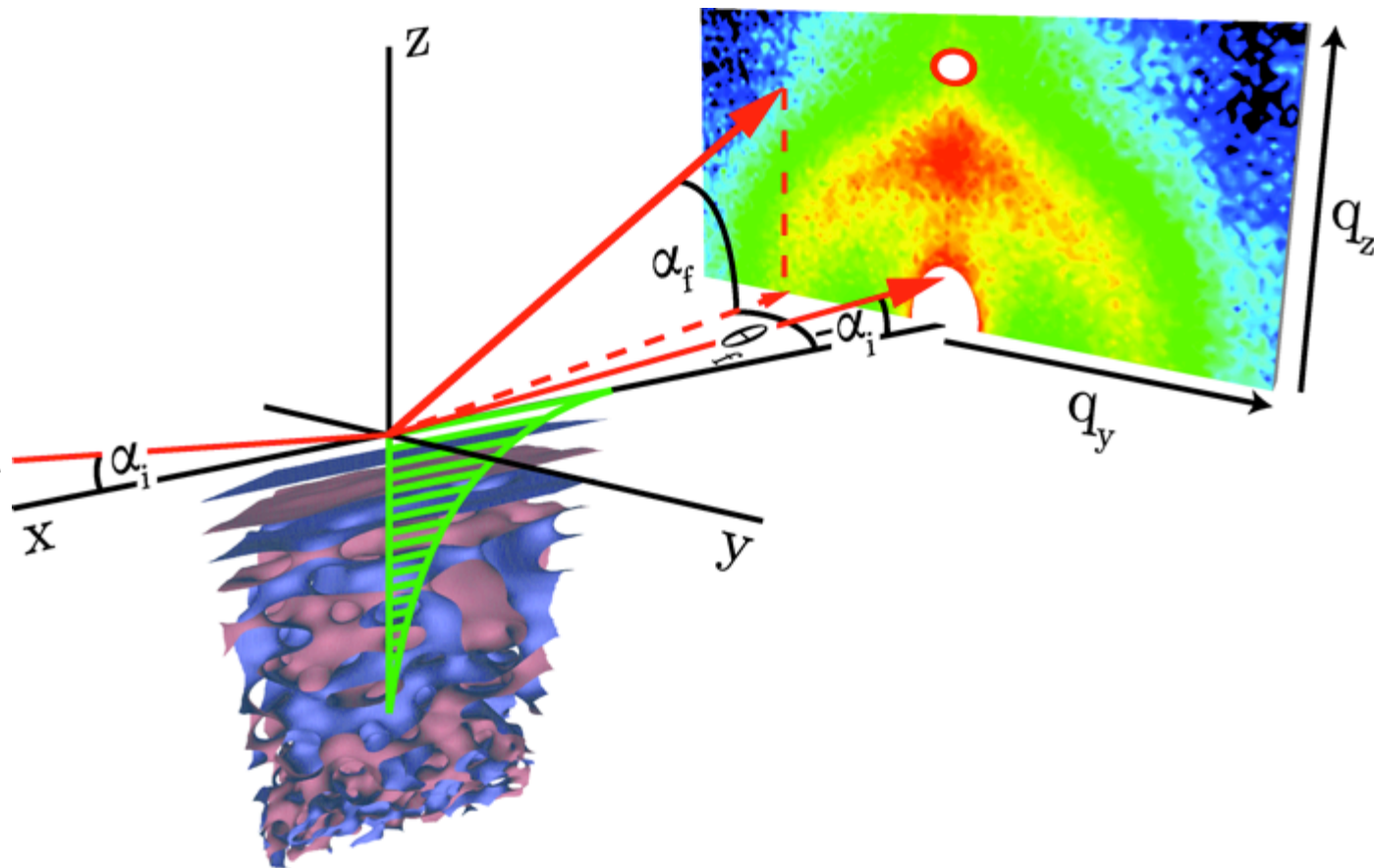


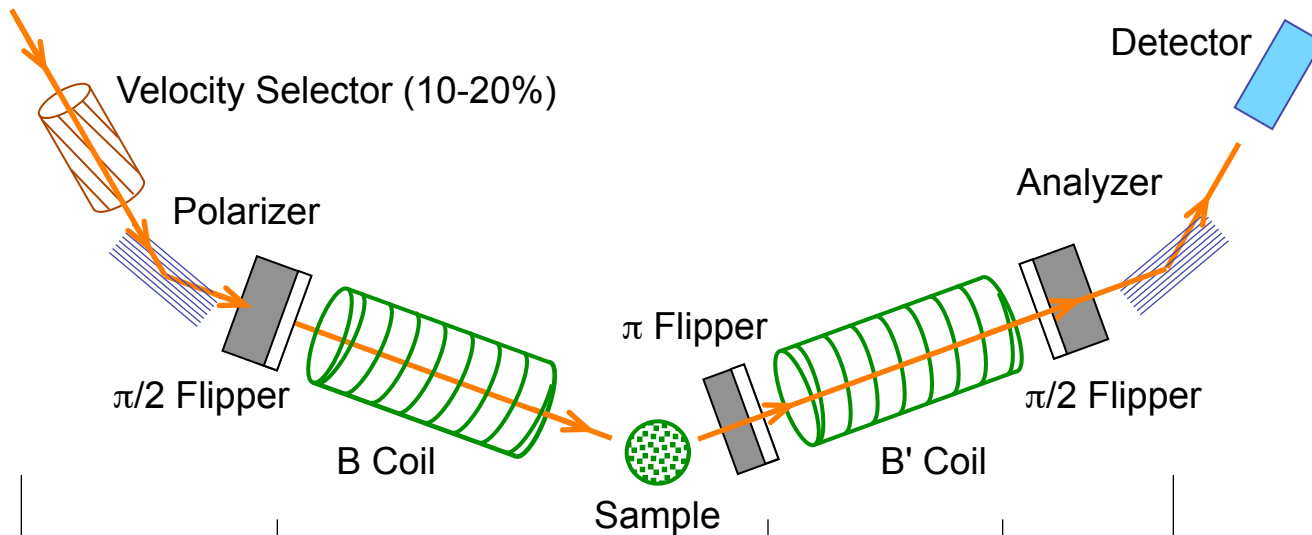
Lamellar: Peak

Isotropic: perforated lam.  
+ bicontinuous

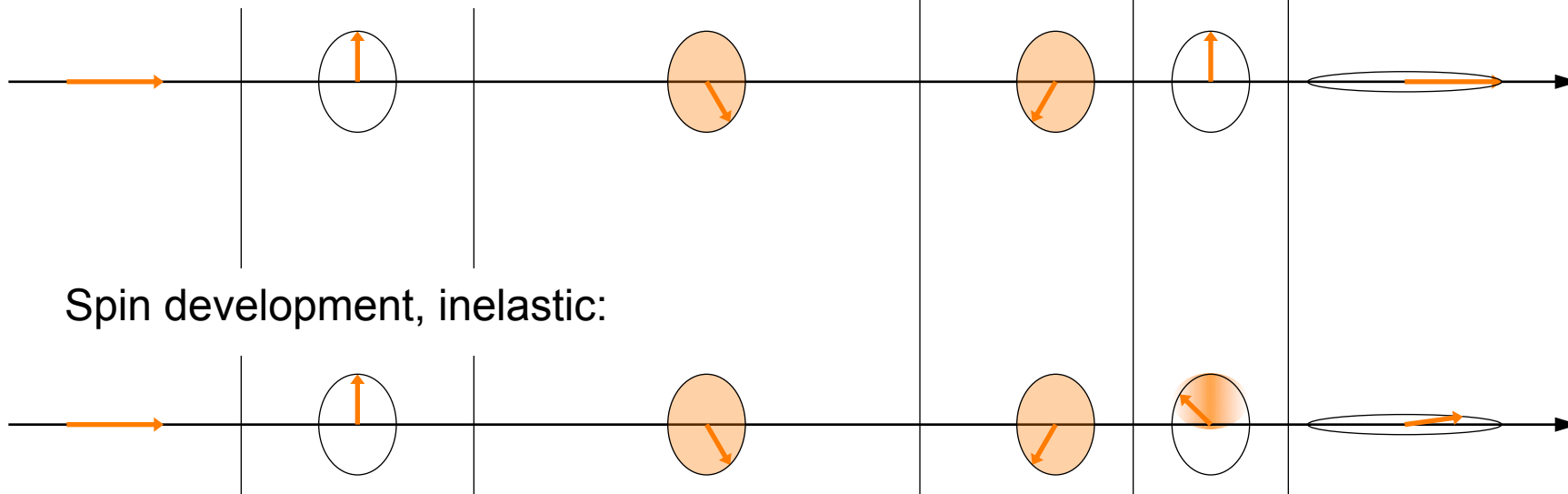
# Grazing Incidence Neutron Spin Echo

GISANS: @8m: 5mm x 43mm  
 GINSES: @4m: 2mm x 60mm

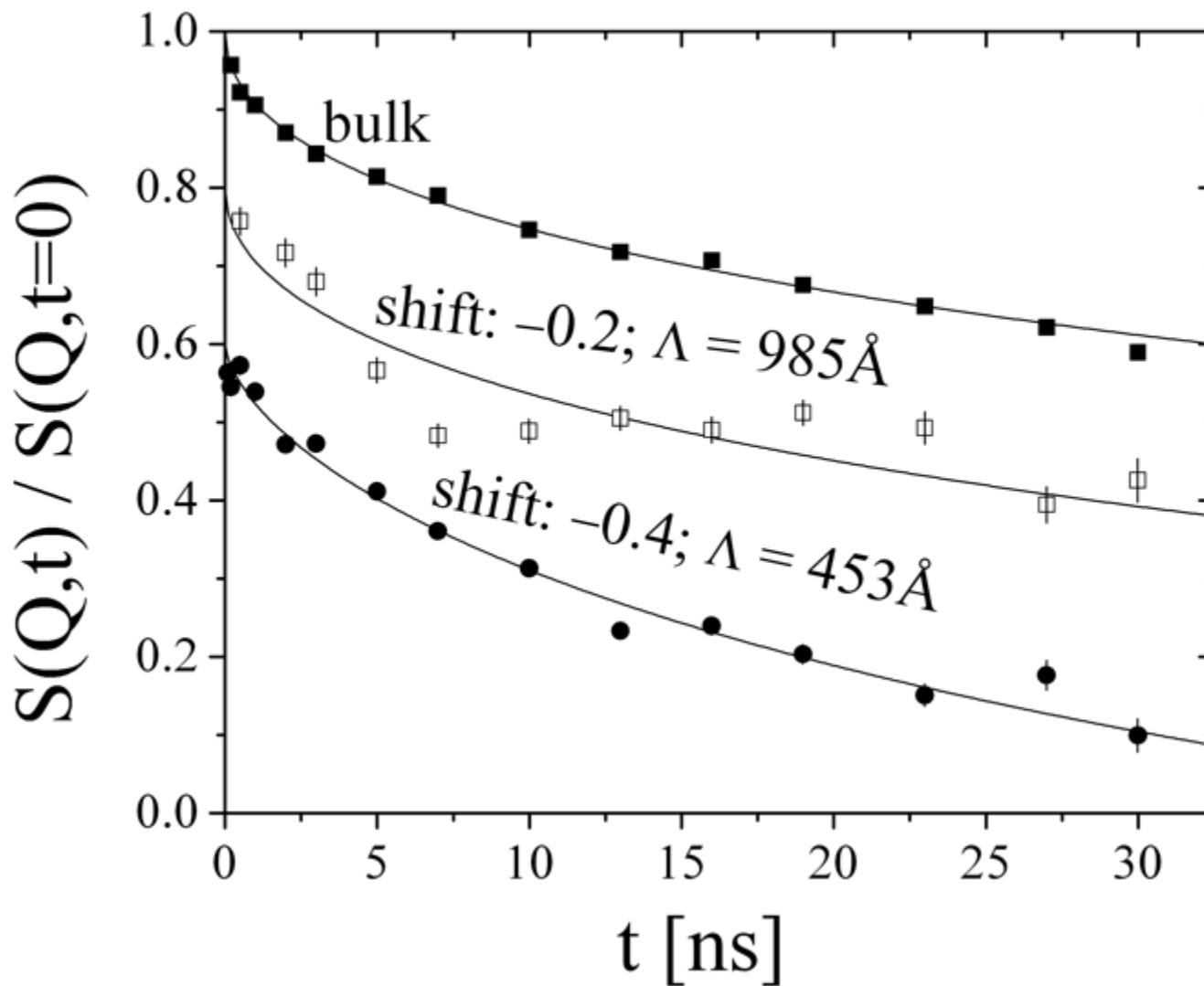




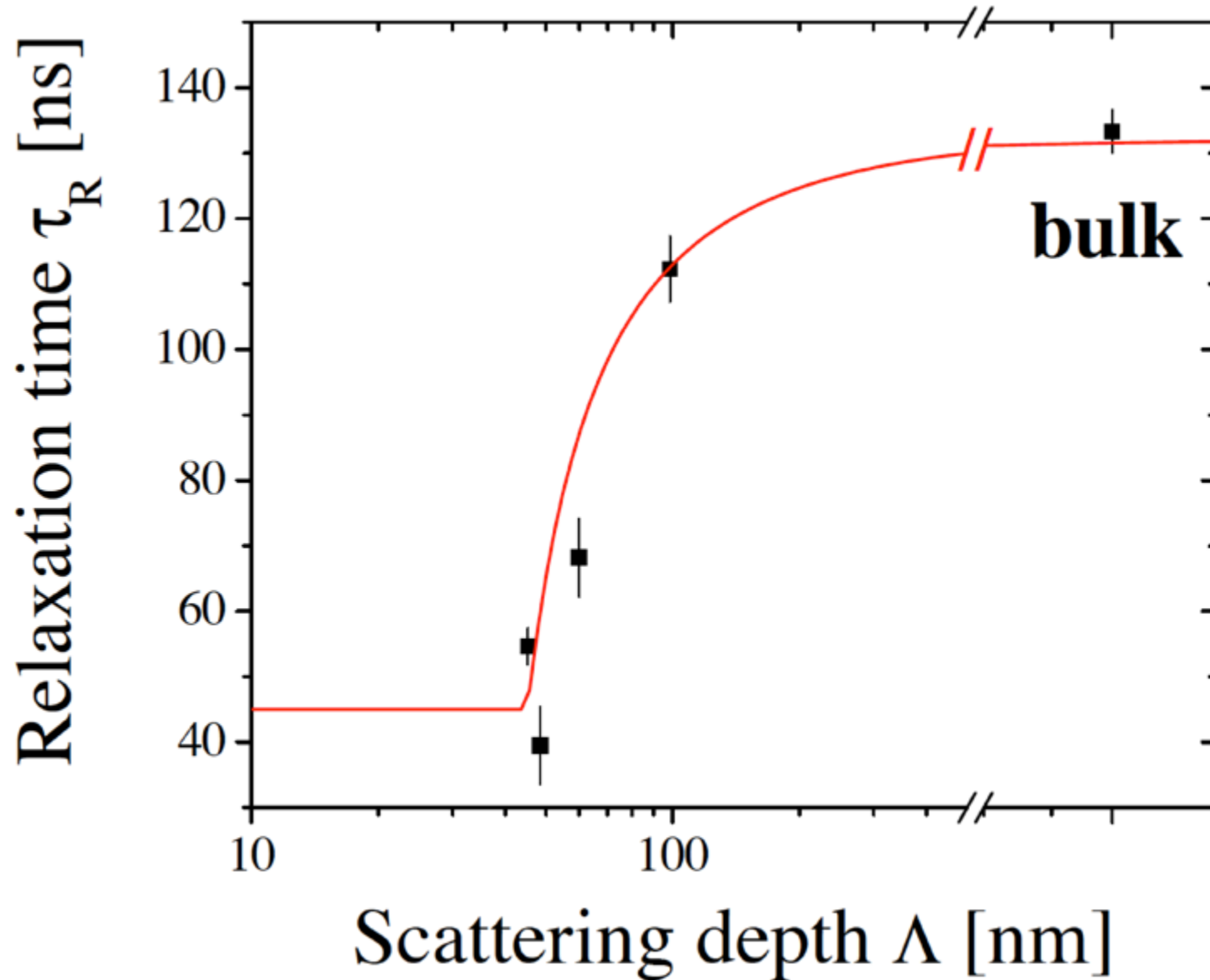
Spin development, elastic:

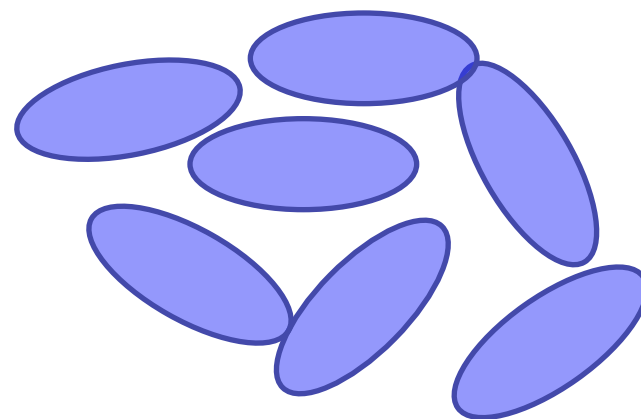
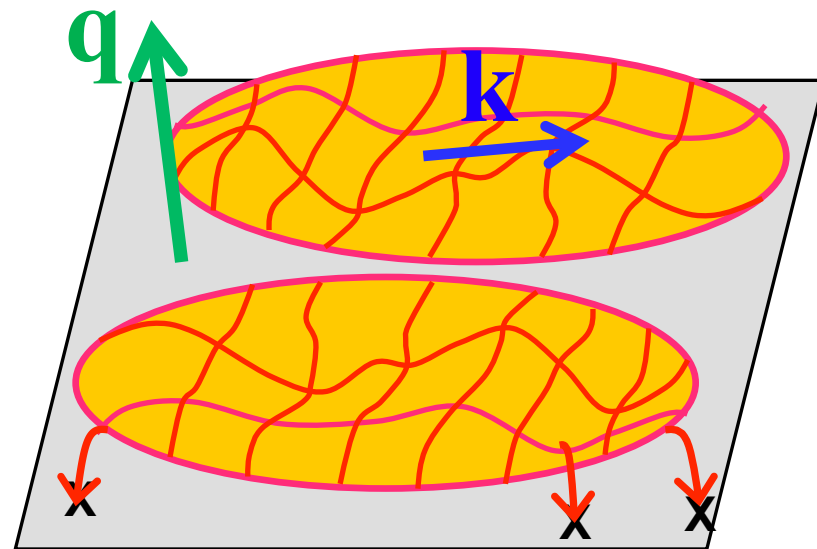
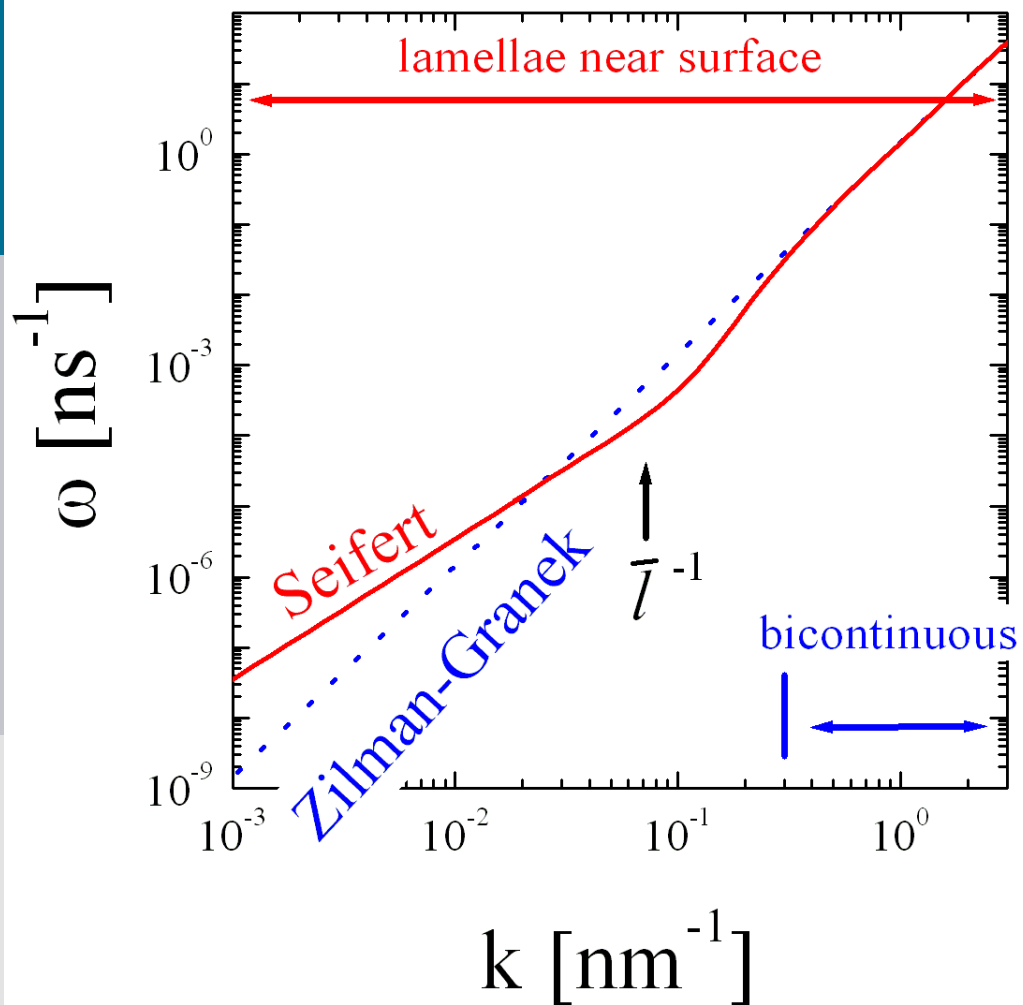


# GINSE Relaxation Spectra



# GINSE Relaxation Times



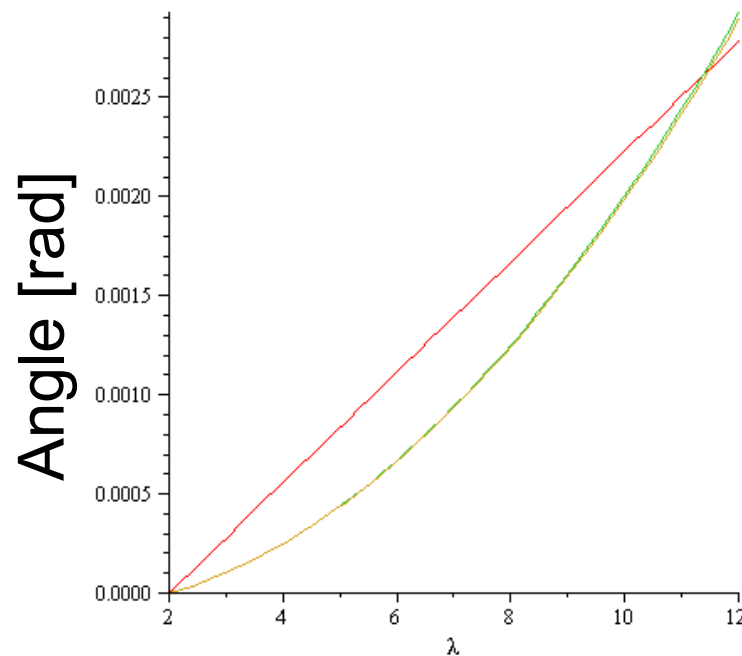
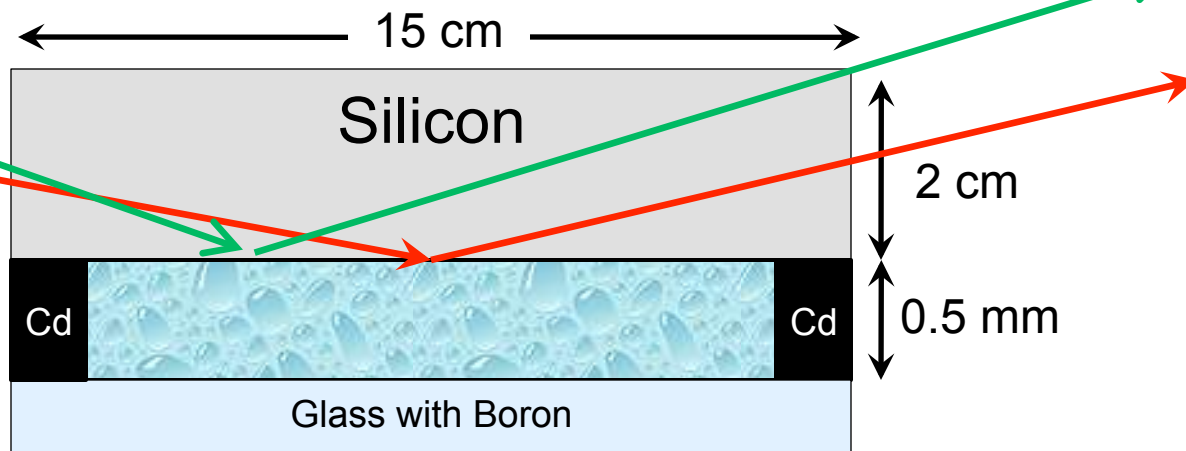
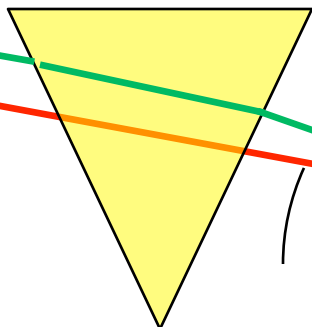




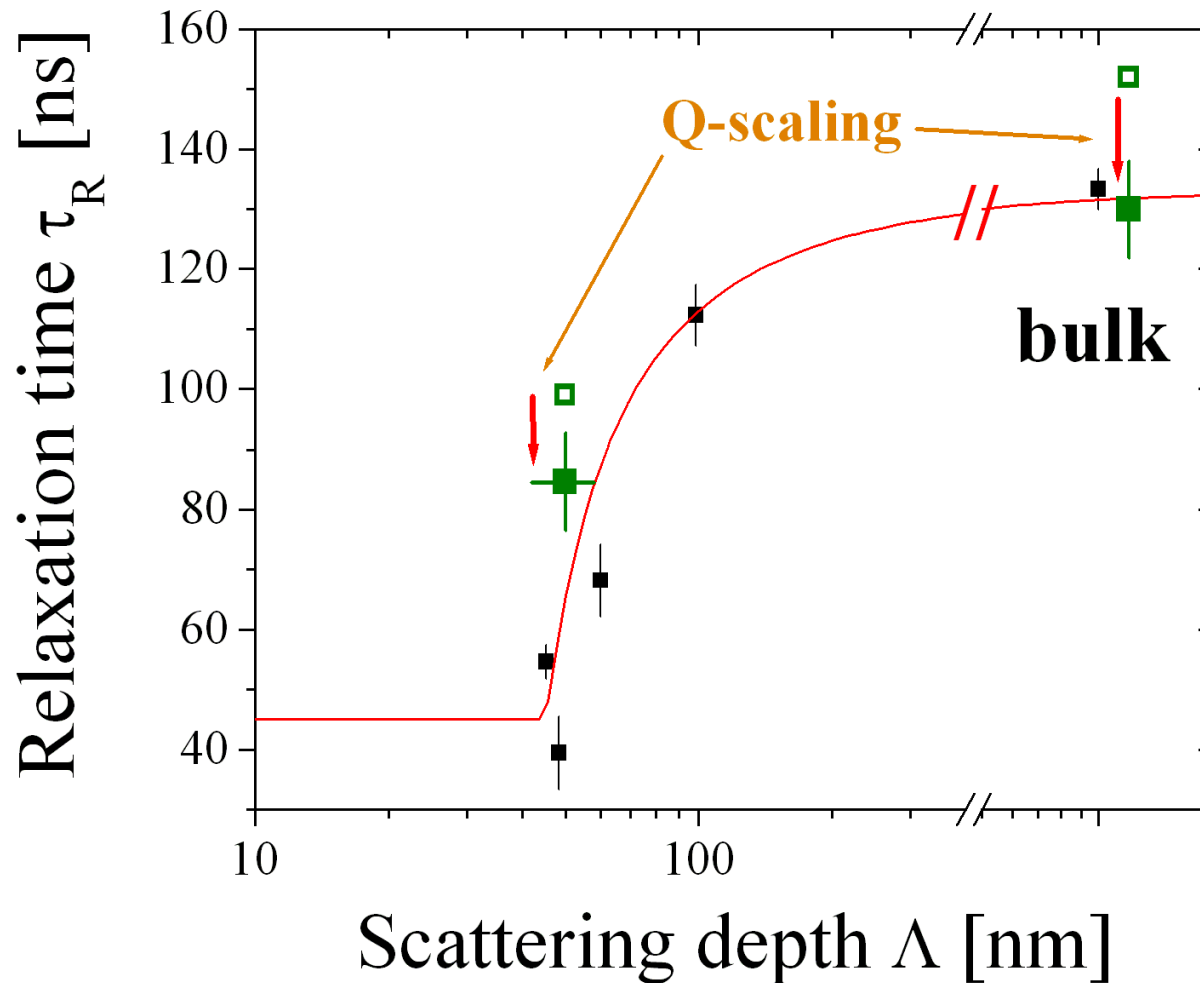
# The Solution: Prism

12Å

2Å



## Comparison Oak Ridge – FRM-2

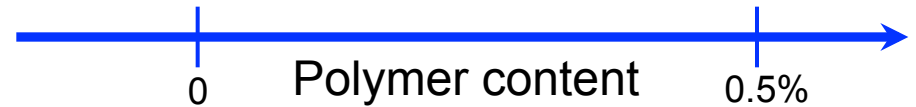
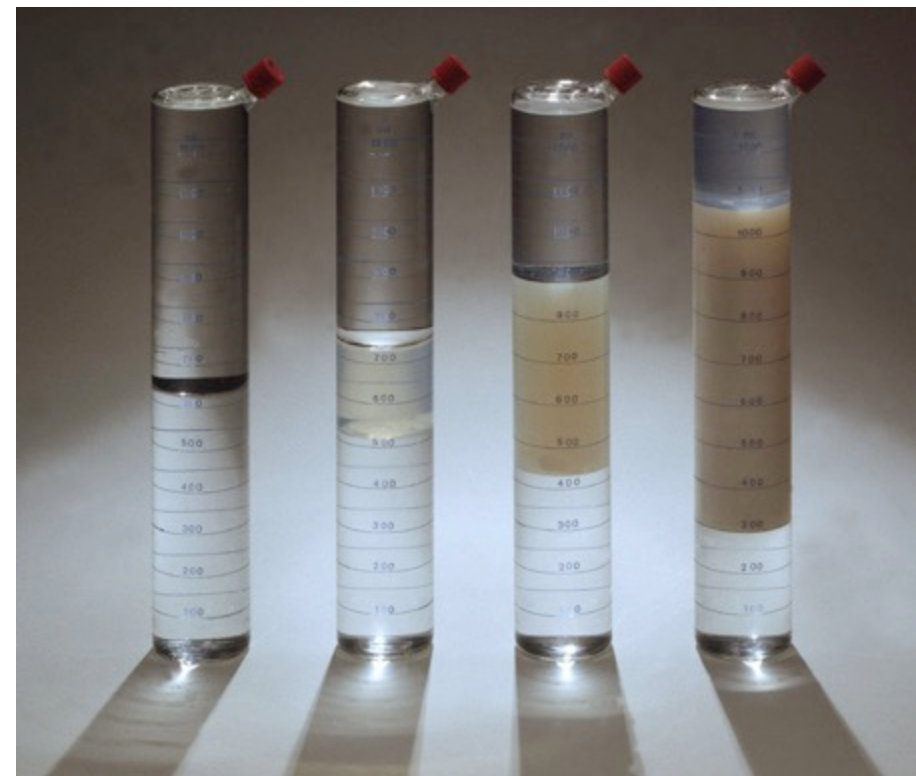
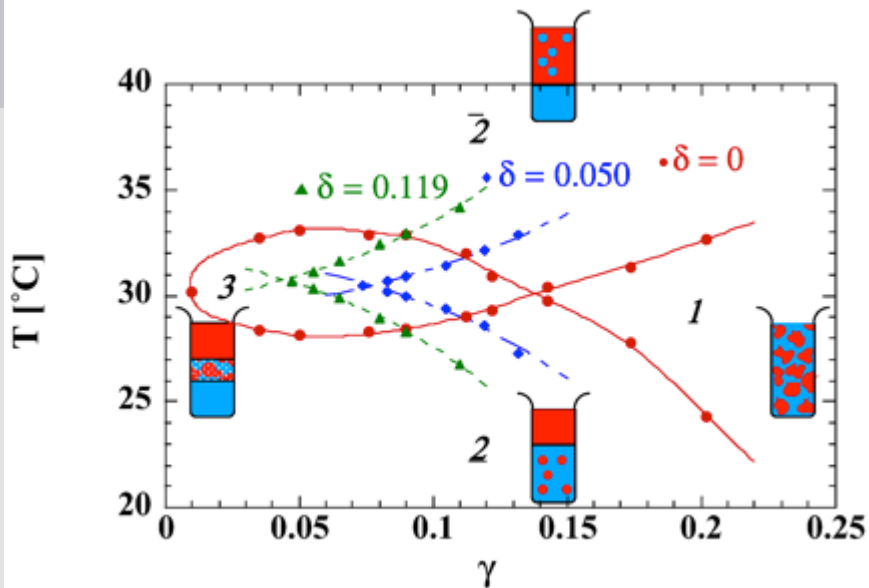
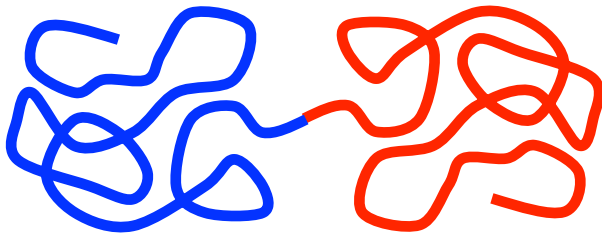


# Polymer Boosting Effect

Non-Ionic Surfactant:  $C_iE_j$



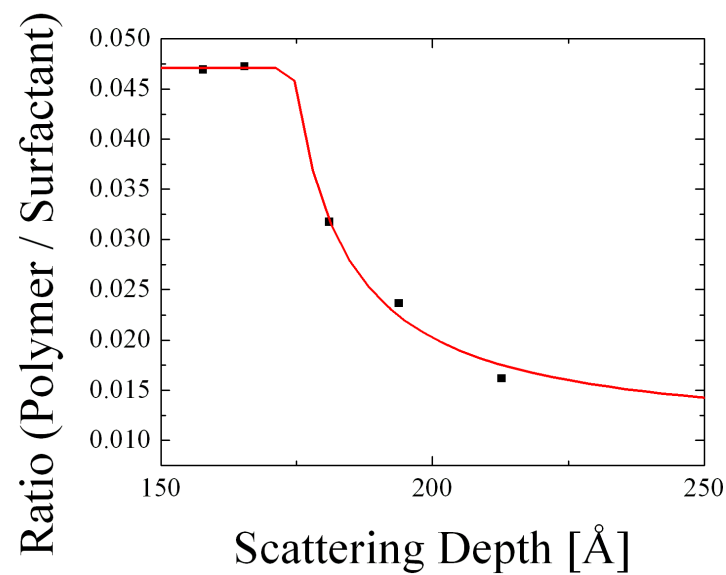
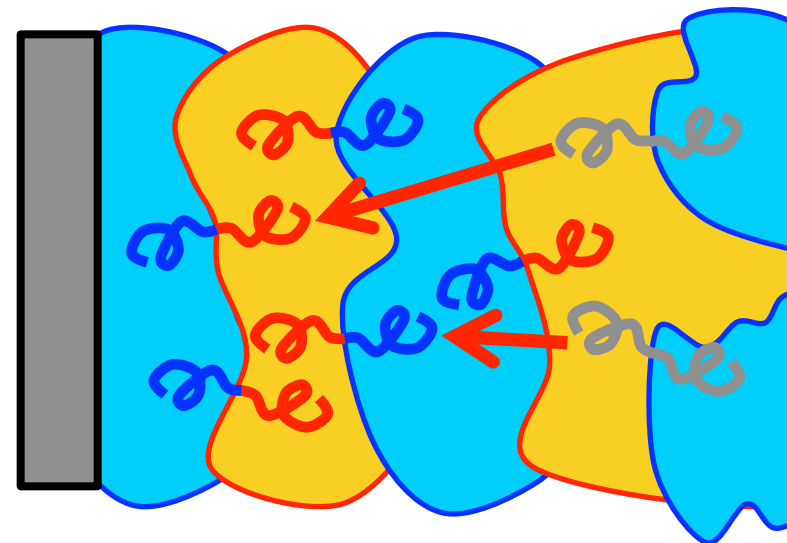
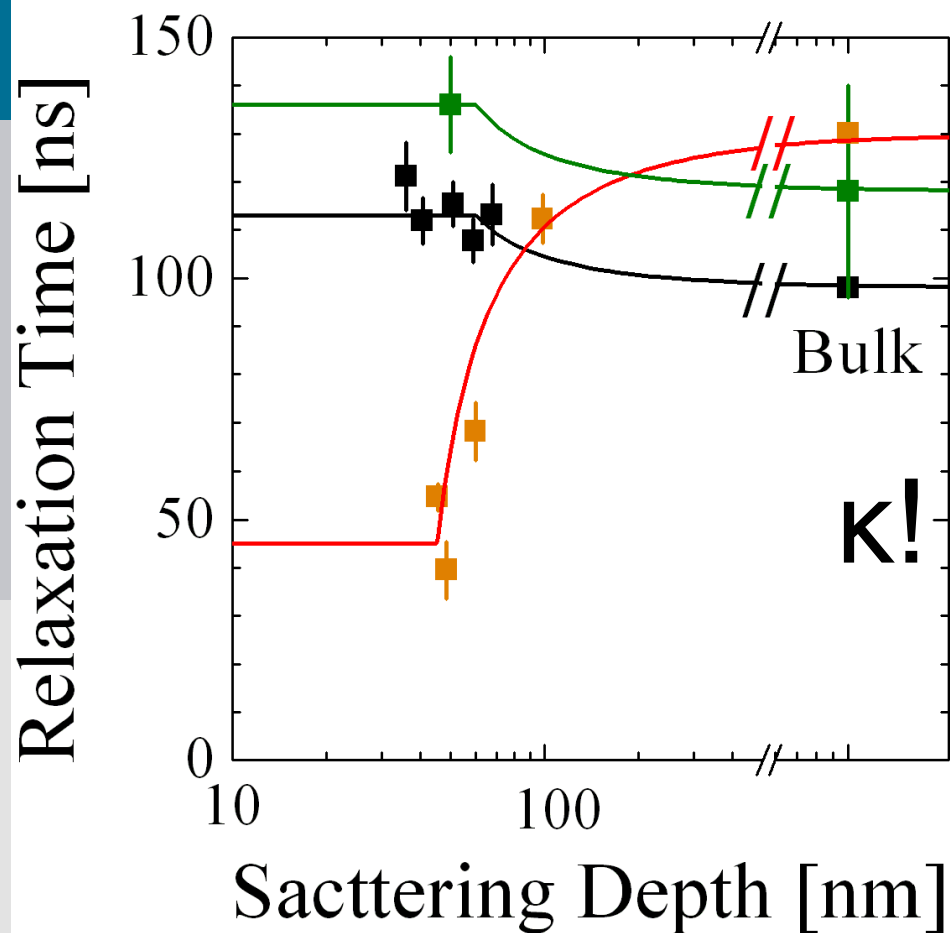
Polymer: Macro-Surfactant



## SANS:

- Polymer is anchored in the film
- Bending rigidity of the membrane is increased

# Dynamics with Polymer

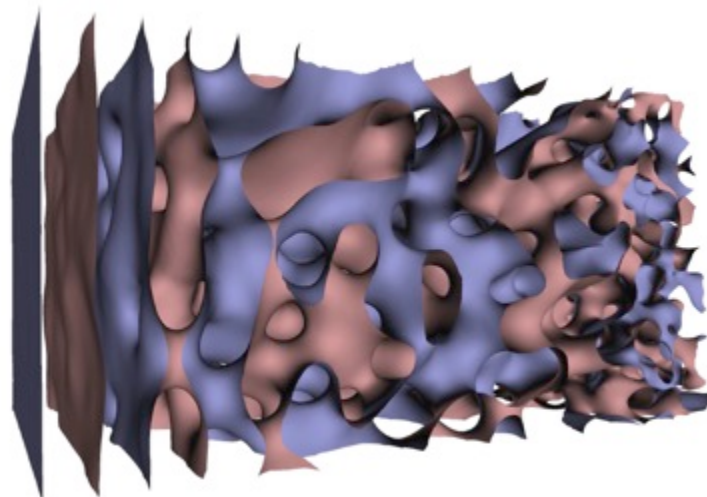


## No Polymer:

- At surface: **Lubrication** Effect

## With Polymer:

- At surface: **Amplification** of viscosity increase



# Improvements of resonator

- Hide resonator structure better below crit. angle
- Go back to 2(?) double layers for lower bckgr.
- Increase planarity (now:  $1\lambda \rightarrow 0.1\lambda$ )
- We still hope for a gain of 30 !
- Prove gain factor experimentally !

Science case:

Tribology at surfaces. Single lipid bilayers.

Membrane proteins.